



Irvine Campus
Housing Authority

Parker Vista: Honoring the contribution of Dr. William H. Parker to the creation and enduring success of University Hills.



Parker Vista looking north



Parker Vista dedication plaque

The Story

Parker Vista is a hilltop observation park located on the ridge above California Avenue, adjacent to the Alturas Rental Townhomes. Parker Vista recognizes the contribution of Dr. William H. Parker to the creation and enduring success of University Hills.

Bill Parker came to UC Irvine in 1967 to join the Physics Department as a professor. Dr. Parker's earliest laboratory research involved seminal experiments that refined the precision of the measurements of fundamental constants. His later research focused on superconductors and other aspects of solid-state physics. Dr. Parker also worked as an academic administrator at UCI, serving in a variety of roles including as Dean, Department Chair, and Vice Chancellor. It was while serving as Vice Chancellor in the early 1980s that Dr. Parker was asked to participate in the planning and design for the UCI faculty housing program that would become University Hills, today the largest academic workforce housing program in the country.

Parker Vista was dedicated to Dr. William H. Parker, Professor Emeritus of Physics, first President of the Irvine Campus Housing Authority (ICHA), and ICHA Board of Directors Chair, at a ceremony on October 15, 2015. Then-President and CEO of ICHA Jane Laning officiated at the ceremony. Speakers included Housing Consultant Courtney Caldwell and UCI faculty Joseph DiMento, Spencer Olin, James McGaugh, Ken Chew, and Dr. Parker himself. Victor Van Zandt, ICHA Vice President of Planning and Construction at the time, spoke at the ceremony about the design of Parker Vista.

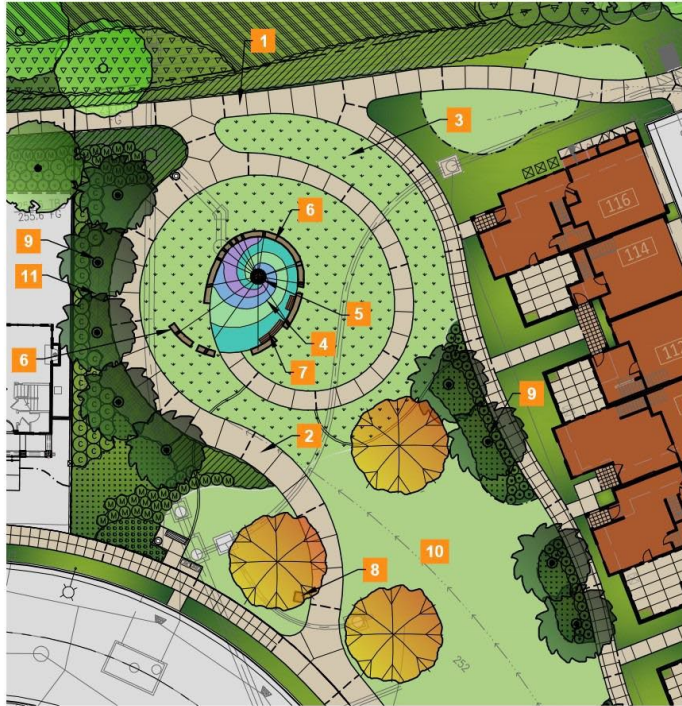


Parker Vista dedication ceremony, October 13, 2015

The Design

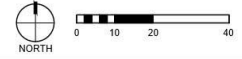
Visualizing Parker Vista as a landmark to honor Dr. Parker's accomplishment, the design team approached the project with the following components in mind:

- From Parker Vista, an observer can see where Dr. Parker works, where he lives, and what he built.
- The design includes markers to local points of interest in University Hills, UCI, Orange County, and California. Markers point the way and show the distance to the UHills Community Center, Founder's Rock, Disneyland (you can see the fireworks from here!), Catalina and the State Capitol, among others.
- Parker Vista is meant to be a place of discovery. The space does not provide all the information. Even the wall surrounding it has missing pieces— information that the visitor begins to fill in about the surroundings. This place of discovery is, in some ways, like the research at UCI, where the “missing pieces” are being discovered. And it is like the classrooms at UCI—a place where knowledge is transmitted. However, the students continue a life-long journey of learning and discovery.



LEGEND

- 1** 6' WIDE CONCRETE WALKWAY CONNECTS TO CORNER AT CALIFORNIA AVENUE AND GABRIELINO DRIVE
- 2** SPIRALING WALKWAY VARIES IN WIDTH FROM 8' WIDE AT CONNECTION TO 12' WALKWAY AT COLTRANE COURT AND NARROWS TO 5' WIDE AS IT SPIRALS TOWARD VISTA POINT
- 3** LOW UN-MOWN MEADOW GRASS ON ROLLING HILL CASCADES DOWN FROM VISTA POINT
- 4** LITHOCRETE PAVING WITH GLASS AGGREGATE IN COLORED SPIRALS AT CENTER PLAZA SPACE - METAL STRIPS IN PAVING ALIGN WITH POINTS OF INTEREST AND BRASS LETTERS INSET IN PAVING DENOTE DISTANCE
- 5** BRONZE COMPASS PLAQUE IN PAVING
- 6** 18" - 30" HIGH CONCRETE WALL - SEAT HEIGHT OR PERCH HEIGHT - NOTCH IN TOP OF WALL AND RECESSED AREA ON FACE OF WALL FOR IDENTIFICATION OF POINT OF INTEREST
- 7** BENCHES
- 8** TYPICAL ICHA PARK IDENTIFICATION MARKER PILASTER
- 9** PINE TREES PROVIDE PRIVACY FOR NEARBY RESIDENTS
- 10** OPEN TURF AREA FOR CASUAL PLAY
- 11** DROUGHT TOLERANT PLANTING AT PERIMETER



University Hills PA10-2
Irvine, California

**PARKER VISTA LANDSCAPE CONCEPT
Plan View**

L2.1
11.03.14

